

Eurex Clearing C7

C7 Advanced Risk Protection GUI - User Manual

Document version C7 Release 9.1

- Simulation valid from 29 March 2023
- Production valid from 22 May 2023

Change History

Date	Release	Change
21 September 2018		Initial version
2020	7.0	No update for C7 Release 7.0
February 2021	7.0.1	No update for C7 Release 7.0.1
09 March 2021	7.1	No update for C7 Release 7.1; Updated Eurex brand design
28 June 2021	8.0	No update for C7 Release 8.0
19 July 2021	8.0	Warning notice added
30 May 2022	9.0	Added details about a change related to possibility of selecting Delete Orders/Quotes flag as FALSE (Soft Breach) or TRUE (Hard Breach) in case of level 3 limits and automatic release of risk limits.
07 November 2022	9.1	No update for C7 Release 9.1

© Eurex 2022

Deutsche Börse AG ("DBAG"), Clearstream Banking AG ("Clearstream"), Eurex Frankfurt AG ("Eurex"), Eurex Clearing AG ("Eurex Clearing"), Eurex Securities Transactions Services GmbH ("Eurex STS") and Eurex Repo GmbH ("Eurex Repo") are corporate entities and are registered under German law. Eurex Global Derivatives AG is a corporate entity and is registered under Swiss law. Clearstream Banking S.A. is a corporate entity and is registered under Luxembourg law. Eurex Frankfurt AG is the administrating and operating institution of Eurex Deutschland. Eurex Deutschland is in the following also referred to as the "Eurex Exchange".

All intellectual property, proprietary and other rights and interests in this publication and the subject matter hereof (other than certain trademarks and service marks listed below) are owned by DBAG or its affiliates and subsidiaries or used under authorization by their respective owners, including, without limitation, all patent, registered design, copyright, trademark and service mark rights. While reasonable care has been taken in the preparation of this publication to provide details that are accurate and not misleading at the time of publication DBAG, Clearstream, Eurex, Eurex Clearing, Eurex Repo as well as the Eurex Exchange and their respective subsidiaries, servants and agents (a) do not make any representations or warranties regarding the information contained herein, whether express or implied, including without limitation any implied warranty of merchantability or fitness for a particular purpose or any warranty with respect to the accuracy, correctness, quality, completeness or timeliness of such information, and (b) shall not be responsible or liable for any third party's use of any information contained herein under any circumstances, including, without limitation, in connection with actual trading or otherwise or for any errors or omissions contained in this publication.

This publication is published for information purposes only and shall not constitute investment advice respectively does not constitute an offer, solicitation or recommendation to acquire or dispose of any investment or to engage in any other transaction. This publication is not intended for solicitation purposes but only for use as general information. All descriptions, examples and calculations contained in this publication are for illustrative purposes only.

Eurex and Eurex Clearing offer services directly to members of the Eurex Exchange respectively to clearing members of Eurex Clearing. Those who desire to trade any products available on the Eurex market or who desire to offer and sell any such products to others or who desire to possess a clearing license of Eurex Clearing in order to participate in the clearing process provided by Eurex Clearing, should consider legal and regulatory requirements of those jurisdictions relevant to them, as well as the risks associated with such products, before doing so.

Only Eurex derivatives that are CFTC-approved may be traded via direct access in the United States or by United States persons. A complete, up-to-date list of Eurex derivatives that are CFTC-approved is available at: <https://www.eurex.com/ex-en/rules-regs/eurex-derivatives-us/direct-market-access-from-the-us>.

In addition, Eurex representatives and participants may familiarize U.S. Qualified Institutional Buyers (QIBs) and broker-dealers with certain eligible Eurex equity options and equity index options pursuant to the terms of the SEC's July 1, 2013 Class No-Action Relief. A complete, up-to-date list of Eurex options that are eligible under the SEC Class No-Action Relief is available at: <https://www.eurex.com/ex-en/rules-regs/eurex-derivatives-us/eurex-options-in-the-us-for-eligible-customers>. Lastly, U.S. QIBs and broker-dealers trading on behalf of QIBs may trade certain single-security futures and narrow-based security index futures subject to terms and conditions of the SEC's Exchange Act Release No. 60,194 (June 30, 2009), 74 Fed. Reg. 32,200 (July 7, 2009) and the CFTC's Division of Clearing and Intermediary Oversight Advisory Concerning the Offer and Sale of Foreign Security Futures Products to Customers Located in the United States (June 8, 2010).

Trademarks and Service Marks

Buxl®, DAX®, DivDAX®, eb.rexx®, Eurex®, Eurex Repo®, Strategy Wizard, Euro GC®, FDAX®, FTSE 100, FWB®, GC Pooling®, GCPI®, MDAX®, ODAX®, SDAX®, TecDAX®, USD GC Pooling®, VDAX®, VDAX-NEW® and Xetra® are registered trademarks of DBAG or its affiliates and subsidiaries. All MSCI indexes are service marks and the exclusive property of MSCI Barra. ATX®, ATX® five, CECE® and RDX® are registered trademarks of Vienna Stock Exchange AG. IPD® UK Quarterly Indexes are registered trademarks of Investment Property Databank Ltd. IPD and have been licensed for the use by Eurex for derivatives. SLI®, SMI® and SMIM® are registered trademarks of SIX Swiss Exchange AG. The STOXX® indexes, the data included therein and the trademarks used in the index names are the intellectual property of STOXX Limited and/or its licensors. Eurex derivatives based on the STOXX® indexes are in no way sponsored, endorsed, sold or promoted by STOXX and its licensors and neither STOXX nor its licensors shall have any liability with respect thereto. PCS® and Property Claim Services® are registered trademarks of ISO Services, Inc. Korea Exchange, KRX, KOSPI and KOSPI 200 are registered trademarks of Korea Exchange Inc. The names of other companies and third-party products may be trademarks or service marks of their respective owners.

FTSE® is a trade mark of the London Stock Exchange Group companies and is used by FTSE International Limited ("FTSE") under license. All rights in the FTSE®100 Index (the "Index") vest in FTSE or its licensors. Neither FTSE nor any of their affiliates or licensors (a) assumes any liability, losses, damages, expenses or obligations in connection with any derivative product based on the Index; or (b) accepts any liability for any errors or omissions, fitness for a particular purpose or the results to be obtained from the use of the Index or related data. No party may rely on the Index or related data contained in this communication which Index and data is owned by FTSE or their affiliates. No use or distribution of the Index is permitted without FTSE's express written consent. FTSE does not promote, sponsor or endorse the content of this communication nor any financial or derivative product that it relates to.

PRIIPs: Eurex Deutschland qualifies as manufacturer of packaged retail and insurance-based investment products (PRIIPs) under Regulation (EU) No 1286/2014 on key information documents for packaged retail and insurance-based investment products (PRIIPs Regulation), and provides key information documents (KIDs) covering PRIIPs traded on Eurex Deutschland on its website under the following link: <https://www.eurex.com/ex-en/rules-regs/priips-kids>.

In addition, according to Art. 14(1) PRIIPs Regulation the person advising on, or selling, a PRIIP shall provide the KID to retail investors free of charge.

C7 Advanced Risk Protection GUI User Manual

Table of Contents

1 Introduction 5

1.1 Audience..... 5

1.2 Conventions Used in This Document..... 5

1.3 C7 ARP GUI..... 5

2 Stop Release 7

2.1 Description 7

2.2 Functionality..... 8

 2.2.1 Member Listing Status Change..... 9

2.3 Screen Elements 9

3 Limit Maintenance 11

3.1 Description 11

3.2 Functionality..... 11

 3.2.1 Upload of Risk Limit 14

3.3 Screen Elements 15

4 Four-Eye Approval 18

4.1 Description 18

4.2 Functionality..... 19

4.3 Screen Elements 20

5 Event Log 24

5.1 Description 24

5.2 Functionality..... 24

5.3 Screen Elements 25

6 Dashboard..... 27

6.1 Description 27

6.2 Functionality..... 27

6.3 Screen Elements 27

7 Dashboard Pop Ups 30

7.1 Description 30

7.2 Functionality..... 30

7.3 Screen Element 30

C7 Advanced Risk Protection GUI User Manual

1 Introduction

This document provides an overview of C7 Advanced Risk Protection (ARP) GUI.

All the general features like sorting, filters, search etc. in C7 ARP GUI are similar to the C7 Clearing GUI. For more details, please refer to the C7 Clearing GUI – User Manual available on the Eurex Clearing website: www.eurex.com/ec-en/ => Support => Initiatives => C7 Releases => System Documentation

For detailed information on the C7 ARP functionality, please refer to the C7 ARP Functional Reference Guide, which will be available for download on the Eurex Clearing website: www.eurex.com/ec-en/ => Support => Initiatives => C7 Releases => System Documentation



Caution: The Advanced Risk Protection defines 3 action levels. While level 1 and level 2 limits represent early lines of defense, a level 3 limit is designed as a measure of last resort in order to prevent or limit damage to Clearing Member's and Trading Member's liquidity. Consequently, resulting measures are severe. With a level 3 limit breach the respective member will be set to HALT in ETD Trading and Clearing. For level 3 limit breach, in case if the effective value of 'Delete Orders/ Quotes Flag' is TRUE, all open orders, quotes and pending TES trades will be deleted (Hard Breach). In case the effective value of 'Delete Orders/ Quotes Flag' is FALSE, pending TES trades will be deleted but open orders and quotes will not be deleted and available for restricted ETD trading maintenance (Soft Breach). No new orders, quotes or TES trades can be entered as long as the HALT state persists irrespective of the effective value of 'Delete Orders/ Quotes Flag'. For the case when effective value of 'Delete Orders/ Quotes Flag' is TRUE, deleted orders, quotes and pending TES trades cannot be restored; therefore, any order book priority will be lost.

1.1 Audience

This document is intended for all the members intending to use the C7 ARP GUI. It assumes that the reader has a basic understanding of the clearing and risk management functionalities and the systems offered by Eurex Clearing.

1.2 Conventions Used in This Document

Cross-references to other chapters within this document are always clickable, but not marked separately.

Hyperlinks to websites are underlined.

1.3 C7 ARP GUI

C7 Advanced Risk Protection GUI User Manual

The C7 ARP GUI is accessible via a separate menu switch “ARP” within the C7 GUI. The C7 ARP GUI provides Clearing Members with the facility to stop and release their Non Clearing Members and also maintain risk limits for their Non Clearing Members. The Non Clearing Members can also do maintain limits for themselves. The Clearing House Operator uses the C7 ARP GUI to stop and release Clearing Members and Non Clearing Members and to maintain risk limits for Clearing Members. The C7 ARP GUI has the following windows.

- Stop Release window
- Limit Maintenance window
- Four-Eye approval window
- Event Log window

The C7 ARP GUI also offers a Dashboard and a automatic notification feature on the Dashboard.

C7 Advanced Risk Protection GUI User Manual

2 Stop Release

2.1 Description

The *Stop Release* window can be accessed from the title bar or Dashboard in the C7 ARP GUI. It displays the member's status and the actual reason for halt if a member is in HALT state. Member Stop and Release actions can be initiated from this window. Further details about these functions can be found in the 'Functionality' section of this window.

The *Stop Release* window shows the member list with their up-to-date status. To list only member and/or their status of interest, a filter function is provided. In the search panel of the window there are various filter fields. Upon inquiry, all member records matching the selected filter criteria are listed in the table.

CigMbr	NCM/RC	Status	Halt By Clearing House	Reason for Halt	Member Halted At
ABCE	ABCDE	ACTIVE			
ABCE	XXXX	ACTIVE			
ABCE	YYYY	ACTIVE			
ABCE	ZZZZ	ACTIVE			

Figure 1: Stop release Window

C7 Advanced Risk Protection GUI User Manual

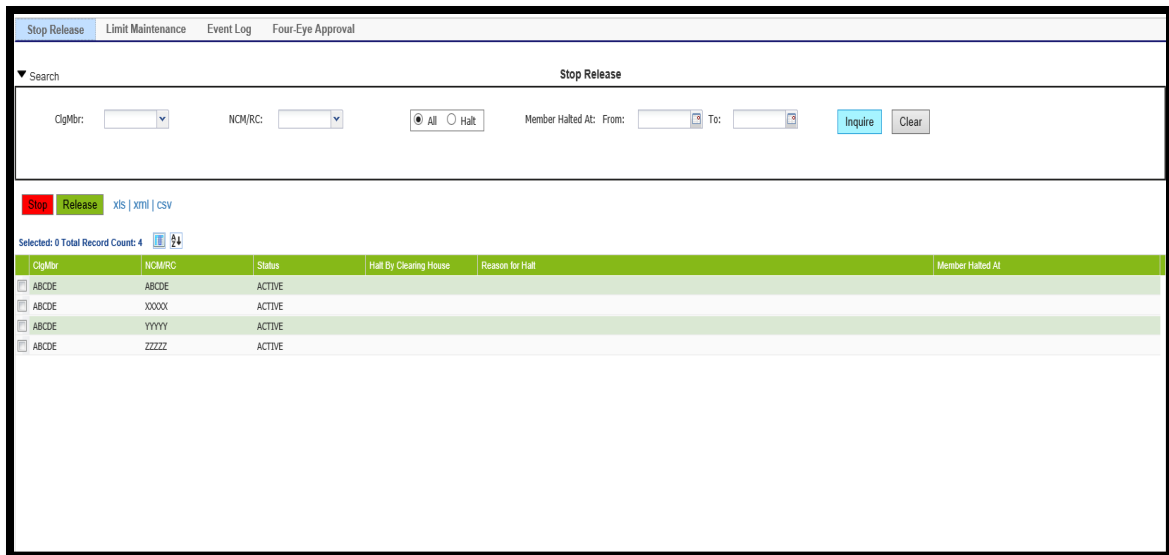


Figure 2: Stop Release Window

2.2 Functionality

Stop button enables Clearing House and Clearing Members to stop their participants from performing any trading and clearing related activity. The Stop Release window provides Clearing Members and Clearing House Operator with the facility to perform a 'Stop' or 'Release' action. Clearing Members can trigger a 'Stop/Release' action on their Non-Clearing Members.

Clearing House Operator can also take 'Stop/Release' actions on Clearing Members and Non-Clearing Members.

Clearing Members and Non Clearing Members are not allowed to take 'Stop/Release' action on themselves.

Below the search panel Stop and Release buttons are available in Stop Release screen to perform Stop and Release actions on the members.

Stop: 'Stop' button performs a Stop action on ETD trading for the selected Member (Non Clearing Member). Clearing House Operator uses the Stop button to Halt Clearing Members and Non Clearing Members from trading. For Clearing House Operator, the Stop button will always be used along with Clearing House/On Behalf radio buttons. On Stop of a Clearing Member, all its associated Non Clearing Members will automatically be stopped from ETD trading. Multiple member selection is not allowed. Only one member can be stopped at a time. Depending on user's entitlement level setup, Four Eyes Principle check may be applicable.

Non Clearing Member can also be stopped automatically if its level 3 risk limit is breached. Non Clearing Members will be stopped automatically if it's Clearing Member is stopped.

Release: 'Release' Button performs a Release action on the selected Member (Non Clearing Member). Clearing House Operator uses the Release button to release Clearing Members and Non Clearing Members. For Clearing House Operator, the Release button will always be used along with Clearing House/On Behalf radio buttons. On Release of a Clearing Member, all its associated Non Clearing Members will automatically be released (if not Halted before when Clearing Member

C7 Advanced Risk Protection GUI User Manual

was Halted). Only one member can be released at a time. Depending on user's entitlement level setup, Four Eyes Principle check may be applicable.

The Release button cannot be used to release a member stopped automatically by a level 3 limit breach. If user tries to do so, it will get an error message. To release an automatic stop which has not been released automatically, the user needs to release the triggered limit on the Limit Maintenance window. Also, the Release button cannot be used if the member is in Halt due to listing status. The listing status of a member can be viewed in the Registered Participant Maintenance window of the C7 GUI. If user will try to do so in C7 ARP by clicking the release button, he will get an error message.

2.2.1 Member Listing Status Change

Members can be stopped/released automatically in C7 Advance Risk Protection depending on their listing status in C7. The Release button cannot be used if the Member is in Halt state due to listing status. If the user tries to do so in C7 ARP GUI by clicking the Release button, he will get an error message.

2.3 Screen Elements

Stop Release - Filter criteria	
Filter	Description
ClgMbr	Filter for Clearing Member
NCM/RC	Filter for Non Clearing Member or Registered Customer.
All and Halt	Filter to show either All statuses or only the Halt status
Halt	Filter for only halt type of member status
Member Halted at	Filter for members halted between time duration

Stop Release – Buttons	
Button	Description
Inquire	'Inquire' button will display member status on the Stop-Release window.
Clear	'Clear' button will clear the Inquiry filter criteria.
Clearing House and On Behalf	These radio button will be used by the Clearing House Operator to either perform the action on its own or on behalf of the Clearing Member.
Stop	Performs a 'Stop' action for the selected member
Release	Performs a 'Release' action for the selected member

C7 Advanced Risk Protection GUI User Manual

Stop Release – Table Columns	
Column	Description
ClgMbr	Identification code of the Clearing Member present in C7 ARP.
NCM/RC	Identification code of the Non Clearing Member/Registered Customer present in C7 ARP.
Status	Status of the member – ACTIVE or HALT.
Halt by Clearing House	Member is halted by Clearing House Operator – Yes or No
Reason for Halt	Reason of Halt Status There could be one of the following reason for Halt status: <ol style="list-style-type: none"> 1. Listing Status changed to Halt 2. CM-CM Level 3 limit for TMR/CULI/CASH/NDM is breached 3. CM-NCM Level 3 for TMR/CULI/CASH/NDM is breached 4. NCM-NCM Level 3 for TMR/CULI/CASH/NDM is breached 5. Stop button hit by Clearing House 6. Stop button hit by Clearing Member 7. Clearing Member of the corresponding Non Clearing Member is in HALT state.
Member Halted At	Displays Date and time at which the member status has been changed to Halt in C7 ARP. For the members whose status is other than Halt i.e. active/ Inactive, the Member Halted at field will be blank.

C7 Advanced Risk Protection GUI User Manual

3 Limit Maintenance

3.1 Description

The *Limit Maintenance* window can be accessed from the *title bar* or Dashboard in the C7 ARP GUI. It displays the member's risk limits configurations and their breach status. Risk Limit maintenance, Manual Slowdown and Release actions can be initiated from this window.

The *Limit Maintenance* window shows member's risk limits and whether the risk limits are breached. To list the records of interest, a filter function is provided. In the search panel of the window there are various filter fields. Upon inquiry, all member's risk limit records matching the selected filter criteria are listed in the table.

Maintenance Participant	Affected Participant	Curr	Type	Level	Previous Amount	Current Amount	Del. Orders/Quotes	Delay in Millisec	Action	Action Result	Limit Breached at
ABCDE	YYYY	EUR	CASH	1			FALSE				
ABCDE	YYYY	EUR	CASH	2			FALSE				
ABCDE	YYYY	EUR	CASH	3			FALSE				
ABCDE	YYYY	EUR	CULI	1			FALSE				
ABCDE	YYYY	EUR	CULI	2			FALSE				
ABCDE	YYYY	EUR	CULI	3			FALSE				
ABCDE	YYYY	EUR	NDM	1			FALSE				
ABCDE	YYYY	EUR	NDM	2			FALSE				
ABCDE	YYYY	EUR	NDM	3			FALSE				
ABCDE	YYYY	EUR	TMR	1			FALSE				
ABCDE	YYYY	EUR	TMR	2			FALSE				
ABCDE	YYYY	EUR	TMR	3			FALSE				

Figure 3: Limit Maintenance

3.2 Functionality

Limit maintenance window enables Clearing Members to define individual risk limits for their Non Clearing Members. Non Clearing Members can also set risk limits for themselves. Clearing House Operator can define limits for Clearing Members including their associated Non Clearing Members. Normally the Clearing House Operators set the limits only for Clearing Members.

Currently four pre-defined risk limit types are available, each representing different aggregates of risk values, calculated on Eurex Clearing's near-real-time risk calculation ability:

Risk type	Abbreviation	Description
1	TMR	Total Margin Requirement
2	CULI	Premium Margin + Current Liquidating Margin + Variation Margin + Option Premium

C7 Advanced Risk Protection GUI User Manual

3	CASH	Variation Margin + Option Premium
4	NDM	Initial Margin

The mentioned risk types contain risk and cash elements from all the markets (including OTC-IRS and Repo) for which Eurex Clearing AG acts as central counterparty and therefore calculates margin requirements.


When setting any such limit, the user has to choose the following action level for each limit:

- Level 1: Send an Alert Message.
- Level 2: Applying a slowdown for Add and Modify Orders/Quotes.
- Level 3: Setting the member to state 'HALT' and halt it from all trading & Clearing activities. Additionally, orders/quotes can be deleted if flag is set to Y.

Action Level Applicable on Clearing Members Level : Level 1 and Level 3.

Action Level Applicable on Non-Clearing Members Level: Level 1, Level 2 and Level 3

Only Clearing House Operator can set risk limit for Clearing Members. However, Non-Clearing Members are allowed to set risk limits for themselves.

	<p>Caution: While level 1 and level 2 limits represent early lines of defense, a level 3 limit is designed as a measure of last resort in order to prevent or limit damage to Clearing Member's and Trading Member's liquidity. Consequently, resulting measures are severe. With a level 3 limit breach the respective member will be set to HALT in ETD Trading and Clearing. For level 3 limit breach, in case if the effective value of 'Delete Orders/ Quotes Flag' is TRUE, all open orders, quotes and pending TES trades will be deleted (Hard Breach). In case the effective value of 'Delete Orders/ Quotes Flag' is FALSE, pending TES trades will be deleted but open orders and quotes will not be deleted and available for restricted ETD trading maintenance (Soft Breach). No new orders, quotes or TES trades can be entered as long as the HALT state persists irrespective of the effective value of 'Delete Orders/ Quotes Flag'. For the case when effective value of 'Delete Orders/ Quotes Flag' is TRUE, deleted orders, quotes and pending TES trades cannot be restored; therefore, any order book priority will be lost.</p>
--	---

Below the search panel there are several buttons to perform actions on Limit Maintenance window.

Submit: C7 ARP supports intraday changes of risk limits through Limit Maintenance window. To change or set a risk limit, click in the respective field, enter a limit amount and submit it by pressing the Submit button. Changes to risk limit amounts and the Order/Quote Delete flags as well as the level 2 delay parameter have an immediate effect. Multiple rows can be changed at the same time. Clicking on Submit button will submit all the changes. Depending on user's entitlement level setup, Four Eyes Principle check may be applicable.

If a risk limit is already breached and the user tries to change either 'Del. Orders/Quotes' flag or the 'Delay' parameter, then it will get an error message. The limit must be released first and only then these values can be changed. However, the Amount can always be changed irrespective of whether the limit is breached or not.

C7 Advanced Risk Protection GUI User Manual

User can release any breached limit by a) increasing the limit amount or b) deleting the limit amount. New limits are sent to Risk System (Prisma). If the limit amount is lower than the margin requirements then Prisma will send an automatic release message to C7 ARP. Alternatively, the user can also release the risk limit in C7 ARP GUI.

Delete Limit: Deleting a limit via the Delete button has immediate effect. Multiple rows can be selected and limits can be deleted. Depending on user's entitlement level setup, Four Eyes Principle check may be applicable.

The Current Amount will become blank and the value of Current Amount field will be moved to Previous Amount field. Other parameters such as 'Del. Orders/Quotes', 'Delay in millisecond' and so on will also be cleared when the limit is deleted. If a limit has been breached, the 'Delete Limit' button can still be used, user can Release the limit by pressing the 'Release Limit' button.

Release Limit: The highest level breached limit is highlighted in yellow. For example L1, L2 and L3 limit is breached for Margin Type TMR. In this case L3 limit breach of TMR would be highlighted in yellow.

The release of a limit happens automatically as soon as the risk requirements fall below the specified limit amount of the active breach. However, members can also release the limits manually via ARP GUI.

If several action levels are triggered for one limit type, releasing the most severe limit causes the automatic release of all action level limits of the same type. If several levels of the same type are breached, then only the most severe level of the limit can be released.

For Example:

Level 1, 2 and 3 of Risk Type TMR have been breached. If the user tries to release level 3 breach, it will result in the release of all the limit, i.e. Level 1, 2 and 3 of type TMR will be released. But if the user tries to release a lower limit (L1 or L2) while a more severe limit is still breached then the system will respond with an error message and ask the user to select and release the most severe breached limit. Of course, if there are any further limits breached for the same member but for another type e.g. CULI, they remain unaffected.

Both the Clearing Member's and the Non Clearing Member's currently triggered limits can be released manually by the respective limit owner.

A member set to HALT for exceeding a level 3 limit cannot be reactivated through the Stop-Release window. An attempt to reactivate a member through the Stop-Release window is rejected with an error message.

Manual reactivations upon level 3 limit breaches can only be performed through the Release Limit button on the Limit Maintenance window. Also, if the risk requirements fall below the specified amount, the member is released automatically.

If a Clearing Member level 3 limit is released, the Clearing Member status will change to 'ACTIVE' if he was on Halt due to only this reason. Also, the associated Non Clearing Members will be set to 'ACTIVE' if the only reason for their Halt was that the Clearing Member Level 3 limit was breached. Depending on user's entitlement level setup, Four Eyes Principle check may be applicable.

Slowdown: It is possible for users to use the slowdown functionality manually. If activated, all transactions in all products for the member are delayed in trading platform T7 by the defined delay time in C7 ARP. Defined delay time is determined as highest delay time from all setup level 2 limits

C7 Advanced Risk Protection GUI User Manual

for the combination of maintenance and affected participant. User can select multiple rows and click on slowdown button, but only the limit level 2 with highest delay time will be slowed down even if not selected.

This function is available if the following conditions apply:

- The member to be slowed down has at least one level 2 limit defined by the member that is triggering the manual slowdown.
- The member to be slowed down is not stopped or slowed down already (manually or via level 2 limit breach)
- There is no pending Four Eyes request for risk limit maintenance for level 2 limit

If these conditions are not fulfilled, the manual slowdown is rejected with an error message.

Depending on user's entitlement level setup, Four Eyes Principle check may be applicable.

Automatic release of breaches coming from Risk System (Prisma) will not have an impact on release of slowdown.

3.2.1 Upload of Risk Limit

An upload or import feature is provided to maintain several risk limits at once. Upload feature reduces significantly the operative risk especially for on behalf entries as the file is provided by the member.

- It is possible to first download the risk limits to a file, modify the risk limits and then upload this file.
- Now upload the file by clicking the 'Upload XLS' link on the 'Limit Maintenance window'. Import the file using the file selection pop-up and click 'Upload'.
- The content of the file will be immediately reflected in the inquiry result grid on the Limit Maintenance window. The rows where the risk limits are modified will be distinguished with the value 'Mod' in the 'Action' column and 'Pending' in the 'Action Result' column. The rows where risk limits are defined for the first time will be distinguished with the value 'Add' in the 'Action' column and 'Pending' in the 'Action Result' column.
- If there is a syntax or a formatting error in some records in the input file, the respective records will not be updated in the inquiry result grid. Instead a pop-up message will be displayed containing the records which were not uploaded successfully. The remaining records which are successfully validated will be updated in the inquiry result grid. For example, if 5 out of 15 uploaded records are erroneous, then the 10 correct records will be displayed in the inquiry result grid and an error pop-up will be displayed containing the details of the 5 erroneous records.

Now the user can click on the 'Submit' button to submit the modifications. If the records are successfully modified, the Action Result will display 'Modified successfully' against those records. For the records where some validations fail, the Action Result will display the respective error message.

C7 Advanced Risk Protection GUI User Manual

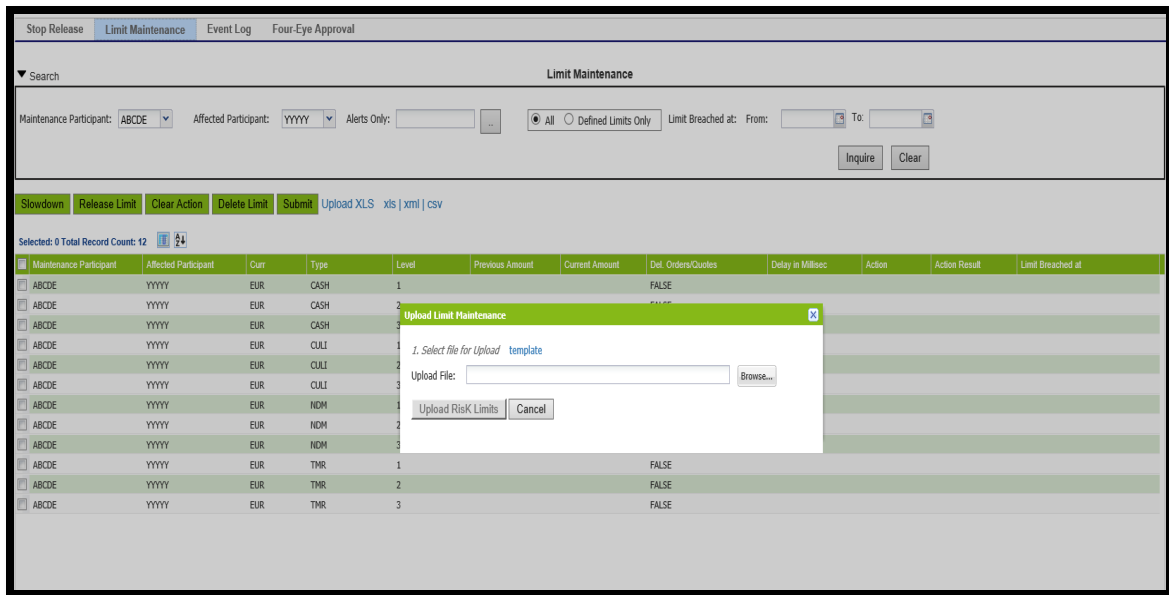


Figure 4: Limit Maintenance- Upload Screen

3.3 Screen Elements

Limit Maintenance - Filter criteria	
Filter	Description
Maintenance Participant	Identification code of the member who set the risk limits.
Affected Participant	Identification code of the member for whom the risk limits applies.
Alerts Only	Filter for breached risk limits Valid values: Level 1 Breached Limits, Level 2 Breached Limits, Level 3 Breached Limits
All/Defined Limits Only	Filter to show either all rows or only the rows where risk limits are defined
Limit Breached at	Filter for risk limits breached between time duration

Limit Maintenance – Buttons	
Button	Description
Inquire	Inquire button will display risk limits on the Limit Maintenance window.
Clear	Clear button will clear the Inquiry criteria.
Slowdown	Triggers manual slowdown for the selected level 2 limit.

C7 Advanced Risk Protection GUI User Manual

Limit Maintenance – Buttons

Button	Description
	At least one record must be selected to enable Slowdown button.
Release Limit	Releases the selected triggered limit. At least one record must be selected to enable Release Limit button.
Clear Action	Clears the settings of the selected row and reverts them to the previous state.
Delete Limit	Deletes the currently selected limit with immediate effect. At least one record must be selected to enable Delete Limit button.
Submit	Applies changes in the table. At least one record must be selected to enable Submit button.

Limit Maintenance – Table Columns

Column	Description
Maintenance Participant	Identification code of the member who set the risk limits. Note: Clearing House Operator can define limits for Clearing Member. Also Clearing House Operator can define limit for a Non Clearing Member, either on behalf of the Clearing Member/Non Clearing Member or on his own. In all such cases where Clearing House Operator is defining limits, this column will be shown with maintenance member = Clearing Member/Non Clearing Member on the GUI.
Affected Participant	Identification code of the member for whom the risk limits applies.
Curr	Clearing Currency of the Clearing Member.
Type	Types of Risk Limit. 'TMR' – (Total Margin Requirement) 'CULI' – (Premium Margin + Current Liquidating Margin + Variation Margin + Option Premium) 'CASH' – (Variation Margin + Option Premium) 'NDM' – (Initial Margin)
Level	Action Levels (1-3)
Previous Amount	Last effective risk limit amount. Amount will be displayed with a thousand separator (,).
Current Amount	Current risk limit amount field holds the intraday modified amount. Amount will be displayed with a thousand separator (,). This field is empty until the first change is done on the current business day or if the latest modified amount is equal to the Previous Amount. The amount can be updated only in the multiples of thousand. The minimum value allowed is 1000 and Maximum value allowed is 900,000,000,000. User have to click 'Submit' to submit modified amount.

C7 Advanced Risk Protection GUI User Manual

Limit Maintenance – Table Columns

Column	Description
Del. Orders/Quotes	<p>'Del Orders/Quotes' flag allows members to configure to delete all open orders and quotes upon risk limit breach.</p> <p>This field is only enabled when the user enters a value in the field Current Amount. The default value is always FALSE for all limits and can be configured to TRUE for level 3 limits.</p>
Delay in millisec	<p>Transaction delay in milliseconds. Applicable to risk limit level 2 only. This field will be enabled only when the user enters value in field Current Amount for a Level 2 risk limit. The fields will be displayed with yellow background and submit button will be disabled if user enters value in field Current Amount for a Level 2 risk limit and do not fill value in this field.</p> <p>The minimum value allowed is 0 milliseconds and Maximum value allowed is 5000 milliseconds.</p>
Action	<p>Specifies action to be executed.</p> <p>Example: Mod</p> <p>Action field will have value as 'Mod' when a user modifies a risk limit. This applies when the user changes the limit for the first time for a blank row or when the user modifies an already set risk limit.</p> <p>Click on the 'Clear Action' button will clear this field to blank.</p> <p>In case of Release, Slowdown and Delete button click event, the value in this field (that is Rel/ Sldn/Del) will be displayed only when the response of Release, Slowdown and Delete action is received from the system.</p> <p>In case of upload of risk limits by a XLS file, the Action column will display all the actions that are going to be applied on the Members.</p> <p>Also click on 'Submit' button will not clear this field. User should click on inquire button again and then values in action column will clear to blank.</p>
Action Result	<p>Specifies the result of the Action. For example If the Action was 'Mod' / 'Del' and then the Submit / Delete button is clicked, the Action result will display 'Modification successful' / 'Deletion Successful' if the modification / Deletion was successful. It may also display an error message if the modification was not successful and a validation failed in the system. This is particularly useful when the user is modifying several rows at a time. As soon as the window is refreshed, the value of this column will be blank again.</p> <p>It may be possible that the error message is quite big and does not fit in the Action Result column. In this case, when user hovers the mouse cursor on the error message then the entire error message will be displayed over mouse hover.</p>
Limit Breached At	<p>Displays Date and time at which the risk limit has been breached in C7 ARP.</p> <p>For un-breached/released limits, the Limit Breached at field will be blank.</p>

C7 Advanced Risk Protection GUI User Manual

4 Four-Eye Approval

4.1 Description

The *Four Eye Approval* window can be accessed from the title bar or via Dashboard in the C7 ARP GUI. It displays the pending four eye approval requests initiated by certain actions taken on *Stop Release and Limit Maintenance* windows. Approve and Reject actions can be initiated from this window.

The *Four Eye Approval* window shows *four eye* requests with their status. To list only *four eye* requests of interest, a filter function is provided. In the search panel of the window there are various filter fields. Upon inquiry, all *four eye* requests matching the selected filter criteria are listed in the table.

Examples are provided here for the Limit Maintenance and Stop-Release result grids.

The screenshot displays the 'Four-Eye Approval' window for 'Limit Maintenance'. The search panel includes the following filters:

- Activity Type:** Radio buttons for 'Limit Maintenance' (selected) and 'Stop Release'.
- Basic Data:** 'Clearing House' dropdown set to 'ECAG', 'Maintenance Participant' dropdown, and 'Affected Participant' dropdown.
- User Details:** 'Initiating User' and 'Approving/Rejecting User' text input fields.
- Four EP Request Status:** Radio buttons for 'Pending' (selected) and 'Approve/Reject'. A date range filter is also present.

Below the search panel, there are buttons for 'Approve', 'Reject', and file export options (xls | xml | csv). The table below shows 4 total records:

Maintenance Part	Affected Part	Cur	Type	Level	Previous Am.	Current Am.	Del. Orders/Q	Delay in Millsec	Action	Initiating User	Approving/Rejecting	Four EP St.	Four Eye Creation TimeStamp
ABCDE	XXXXX	EUR	THR	2		190,000	FALSE	800	RELEASE	EUREXBATRAI		PENDING	2018-09-17 14:31:26
ABCDE	XXXXX	EUR	NDM	3	190,000		FALSE		DELETE	EUREXBATRAI		PENDING	2018-09-17 14:31:20
ABCDE	XXXXX	EUR	CULI	3	1,200,000	8,900,000	TRUE		UPDATE	EUREXBATRAI		PENDING	2018-09-17 14:31:06
ABCDE	XXXXX	EUR	CULI	1	90,000	6,300,000	FALSE		UPDATE	EUREXBATRAI		PENDING	2018-09-17 14:31:06

Figure 5: Four-Eye Approval - Limit Maintenance

C7 Advanced Risk Protection GUI User Manual

CigMbr	NCM/RC	Current Status	Updated Status	Halt By Clearing House	Reason For Halt	Initiating User ID	Approving/Rejecting User ID	Four EP Status	Four Eye Creation TimeStamp(CET,CEST)
ABCDE	ZZZZZ	ACTIVE	HALT	YES	Stop button hit by Clearin	EUREXEXCSPV		PENDING	2018-09-17 14:32:00

Figure 6: Four-Eye Approval - Stop Release

4.2 Functionality

The Four-Eye Approval window will enable the users to view (user's own requests) and act on the pending four-eye requests initiated by other users of his participant to perform the appropriate action (Approve/Reject). Following operations can be performed on this window

- Inquiry of pending Four Eyes requests for Risk Limit Maintenance and Member Stop-Release actions.
- Approve the pending requests.
- Reject the pending requests.
- View historical (10 days but configurable) approved or rejected Four Eyes requests

The Four-Eye Approval window is divided in two different sections. One section is for inquiry related fields where user can fill/select the value and view the data as per its need. The inquiry section also has filter for limit maintenance and stop-release activity where user can select any one of them (by default Limit Maintenance is selected).

The second section is for the inquiry result grid that displays different columns as per the selection of Limit Maintenance or Stop-Release activity type in the inquiry section.

Historical Search: It is possible to search historical data in the four-eye approval window. Date filter can be used to view pending and approved/rejected Four Eyes request for the specified period.

Note: Every new business day during C7 ARP SOD process, all member initiated pending Four Eyes requests are deleted and only internal user's (CH) initiated pending Four Eyes requests will be carried forward to next business day. The internal user's (CH) initiated pending Four Eyes requests will be displayed in the C7 ARP GUI until they are approved/rejected.

Limit Maintenance pending Four Eyes request

User can approve and reject multiple requests at the same time. Request initiator cannot approve its own request. However, it can reject its own initiated request. Approval of different request types

C7 Advanced Risk Protection GUI User Manual

when multiple requests are selected is allowed. User cannot approve pending requests that are already acted upon.

If a member has been released automatically, a pending request for the release of that limit is deleted.

Stop-Release pending Four Eyes request

User can approve and reject only one single request at a time. Request initiator cannot approve its own request. However, it can reject its own initiated request. User cannot approve pending requests that are already acted upon.

Note: Clearing House Operator can also inquire and act on the pending four eye requests initiated by members.

4.3 Screen Elements

Four Eye Approval - Filter criteria	
Filter	Description
Activity Type	Filter for Activity type Based on the selection of the Activity type different columns will be displayed in the inquiry results grid. Activity Type : 'Limit Maintenance' and 'Stop Release'
Clearing House	Filter for the Clearing House of the Logged In user This is a mandatory field and will be pre-filled with the clearing house Id of the logged in user.
Maintenance Participant	Filter for Identification code of the member who set the risk limits.
Affected Participant	Filter for Identification code of the member for whom the risk limits applies.
ClgMbr	Filter for Identification code of the Clearing Member present in C7 ARP.
NCM/RC	Filter for Identification code of the Non Clearing Member present in C7 ARP.
Initiating User Id	Filter for Identification code of the request Initiator Wild card search is possible where user can only enter partial text for example ABCXXMBR and all the results where the initiating users for example ABCXXMBRSPV, ABCXXMBRSP1 are displayed.
Approving/ Rejecting User Id	Filter for Identification code of the request Approver/Rejecter Wild card search is possible where user can only enter partial text for example ABCXXMBR and all the results where the initiating users for example ABCXXMBRSPV, ABCXXMBRSP1 are displayed.
Pending and Approve/Reject	This radio button can be used to filter either Pending Four Eyes requests or Approved/Rejected Four Eyes requests
Date	Date filter can be used to view historical data. User can select a range (To and/or From) in this filter. Depending on the selection, C7 ARP will display either pending or approved/rejected Four Eyes requests of the specified period.

C7 Advanced Risk Protection GUI User Manual

Four Eye Approval – Buttons	
Button	Description
Inquire	<p>Retrieves and displays data based on specified filter criterion.</p> <p>All the filters mentioned above are optional. If none of the above filter is specified, it will result in fetching of all the Four Eyes pending records available in the system.</p> <p>The records are first sorted by time (ascending), then in ascending order by Request type and then in ascending order by User Id.</p>
Approve	<p>Approve Button send approval request to C7 ARP.</p> <p>On Clicking approve button backend validations will be performed and on successful approval user will be informed by pop up message.</p> <p>Only pending requests can be approved. Previously approved/rejected request cannot be approved again.</p> <p>Limit Maintenance pending Four Eyes request: User can approve multiple request of the same member together.</p> <p>Stop-Release pending Four Eyes request: User can approve only one single request at a time. Selection panel will not be provided in Stop-Release Inquiry result grid.</p> <p>In case of error, the respective error message will be shown.</p>
Reject	<p>Reject Button sends rejection request to C7 ARP.</p> <p>On Clicking Reject Button, backend validations will be performed and on successful rejection user will be informed by pop up message.</p> <p>Only pending requests can be rejected. Previously acted request cannot be rejected again.</p> <p>Limit Maintenance pending request: User can reject multiple request at the same time.</p> <p>Stop-Release pending Four Eyes request: User can reject only one single request at a time. Selection panel will not be provided in Stop-Release Inquiry result grid.</p> <p>In case of error, the respective error message will be shown.</p>
Clear	Clears the Inquiry Criteria or the values filled in the Inquiry parameters.

Based on the activity type, selection inquiry result grid will display either limit maintenance or stop-release related columns.

For Limit Maintenance the following columns will be displayed on the result grid:

C7 Advanced Risk Protection GUI User Manual

Limit Maintenance – Table Columns	
Column	Description
Selection Panel	Selection Panel to select one or more record
Maintenance Participant	Identification code of the member who set the risk limits
Affected Participant	Identification code of the member for whom the risk limits applies.
Curr	Clearing Member Clearing Currency.
Type	Types of Risk Limit. TMR CULI CASH NDM
Level	Action Levels (1-3)
Previous Amount	Last effective amount. Amount will be displayed with a thousand separator(,)
Current Amount	Current Amount field holds the intraday modified amount pending for approval. Amount will be displayed with a thousand separator
Del. Orders/Quotes	'Del Orders/Quotes' flag allows members to configure to delete all open orders and quotes upon level breach.
Delay in millisec	Transaction delay in milliseconds. Applicable to risk level 2 only.
Action	Specifies action to be approved/reject Example: New Risk Limit Added, Risk Limit Modified, Risk Limit Deleted, Manual Slowdown, Risk Limit released etc.
Initiating User ID	Identification code of the request Initiator.
Four-Eye Request Status	Status of the Four Eyes request. Example: Pending, Approved, Rejected
Four-Eye Request Creation Date and Time	Date and Time of the initiating Four Eyes request
Approving/Rejecting User ID	Identification code of the request Approver/Rejector.

For Stop-Release the following columns will be displayed on the result grid:

C7 Advanced Risk Protection GUI User Manual

Stop-Release – Table Columns	
Column	Description
ClgMbr	Identification code of the Clearing Member present in C7 ARP.
NCM/RC	Identification code of the Non Clearing Member/Registered Customer present in C7 ARP.
Current Status	Current Status of the member – ACTIVE or HALT.
Updated Status	Current Status of the member pending for approval – ACTIVE or HALT.
Halt by Clearing House	Member is halted by Clearing House Operator – Yes or No
Reason for Halt	Reason of Halt Status There could be one of the following reason for Halt status: <ol style="list-style-type: none"> 1- Listing Status changed to Halt 2- CM-CM Level 3 limit for TMR/CULI/CASH/NDM is breached 3- CM-NCM Level 3 for TMR/CULI/CASH/NDM is breached 4- NCM-NCM Level 3 for TMR/CULI/CASH/NDM is breached 5- Stop button hit by Clearing House 6- Stop button hit by Clearing Member. 7- Clearing Member of the corresponding Non Clearing Member is in HALT state.
Initiating User ID	Identification code of the request Initiator.
Four-Eye Request Status	Status of the Four Eyes request. Example: Pending, Approved, Rejected
Four-Eye Request Creation Date and Time	Date and Time of the initiating Four Eyes request
Approving/Rejecting User ID	Identification code of the request Approver/Rejecter.

C7 Advanced Risk Protection GUI User Manual

5 Event Log

5.1 Description

The *Event Log* window can be accessed from the *title bar* in the C7 ARP GUI. The *Event Log* window displays the event messages generated in C7 ARP. Further details about these functions can be found in the 'Functionality' section of this window.

The *Event Log* window shows the Event messages in chronological order. In order to list only event messages of interest, a filter function is provided. In the search panel of the window there are various filter fields. Upon inquiry, all event messages matching the selected filter criteria are listed in the table.

Event Triggered For Participant	Time in CE(SJT)	Event Log
zzzzz	2018-09-20 18:16:58	NON-zzzzz HAS BEEN PUT ON HALT DUE TO NON_SET_TO_HALT_BY_STOP_BUTTON_BY_CH
xxxxx	2018-09-20 18:17:39	CM-NON RISK LIMIT HAS BEEN ADDED [MAINTENANCE PARTICIPANT:ABCD, AFFECTED PARTICIPANT:XXXXX, RISKTYPE:CASH, LEVEL:1]
xxxxx	2018-09-20 18:17:40	CM-NON RISK LIMIT HAS BEEN ADDED [MAINTENANCE PARTICIPANT:ABCD, AFFECTED PARTICIPANT:XXXXX, RISKTYPE:CASH, LEVEL:2]
xxxxx	2018-09-20 18:17:40	CM-NON RISK LIMIT HAS BEEN ADDED [MAINTENANCE PARTICIPANT:ABCD, AFFECTED PARTICIPANT:XXXXX, RISKTYPE:CASH, LEVEL:2]
yyyyy	2018-09-20 18:17:41	CM-NON RISK LIMIT HAS BEEN ADDED [MAINTENANCE PARTICIPANT:ABCD, AFFECTED PARTICIPANT:YYYYY, RISKTYPE:CALL, LEVEL:1]
yyyyy	2018-09-20 18:17:41	CM-NON RISK LIMIT HAS BEEN ADDED [MAINTENANCE PARTICIPANT:ABCD, AFFECTED PARTICIPANT:YYYYY, RISKTYPE:NDM, LEVEL:1]
yyyyy	2018-09-20 18:17:42	CM-NON RISK LIMIT HAS BEEN ADDED [MAINTENANCE PARTICIPANT:ABCD, AFFECTED PARTICIPANT:YYYYY, RISKTYPE:THR, LEVEL:1]
yyyyy	2018-09-20 18:17:56	CM-NON RISK LIMIT HAS BEEN MODIFIED [MAINTENANCE PARTICIPANT:ABCD, AFFECTED PARTICIPANT:YYYYY, RISKTYPE:CALL, LEVEL:1]
xxxxx	2018-09-20 18:17:56	CM-NON RISK LIMIT HAS BEEN MODIFIED [MAINTENANCE PARTICIPANT:ABCD, AFFECTED PARTICIPANT:XXXXX, RISKTYPE:CASH, LEVEL:3]
yyyyy	2018-09-20 18:18:06	CM-NON RISK LIMIT HAS BEEN DELETED [MAINTENANCE PARTICIPANT:ABCD, AFFECTED PARTICIPANT:YYYYY, RISKTYPE:CALL, LEVEL:1]
xxxxx	2018-09-20 18:18:07	CM-NON RISK LIMIT HAS BEEN DELETED [MAINTENANCE PARTICIPANT:ABCD, AFFECTED PARTICIPANT:XXXXX, RISKTYPE:CASH, LEVEL:3]
yyyyy	2018-09-20 18:18:07	CM-NON RISK LIMIT HAS BEEN DELETED [MAINTENANCE PARTICIPANT:ABCD, AFFECTED PARTICIPANT:YYYYY, RISKTYPE:NDM, LEVEL:1]
yyyyy	2018-09-20 18:18:08	CM-NON RISK LIMIT HAS BEEN DELETED [MAINTENANCE PARTICIPANT:ABCD, AFFECTED PARTICIPANT:YYYYY, RISKTYPE:THR, LEVEL:1]

Figure 7: Event Log

5.2 Functionality

The Event Log window displays the events generated in C7 ARP like Stop-Release action on members, Member Limit Maintenance and risk limit breaches.

The Clearing House Operator can see Risk Limits defined for Clearing Member, Level 3 limit breaches and Stop/Release events in the Event Log window.

Clearing Members can see events of their Non Clearing Members related to Level 3 limit breaches, Stop/Release action, Member Limit Maintenance and risk limit breaches if the risk limits are defined by the Clearing Member for its Non Clearing Member. Clearing Member cannot see the Member Limit Maintenance and risk limit breaches events for the limits defined by Non Clearing member.

Event Log window provides the users with the facility to Inquire events. By default, these events will be displayed only for the current business day in chronological order. However, user can inquire for historical data by using date filter available in search panel.

C7 Advanced Risk Protection GUI User Manual

Legal Messages: For Level 3 limit breach and Stop/Release events, the event messages is highlighted in red color. Clicking on a message opens the Message Detail pop up with the detailed legal text messages in English and German Language.

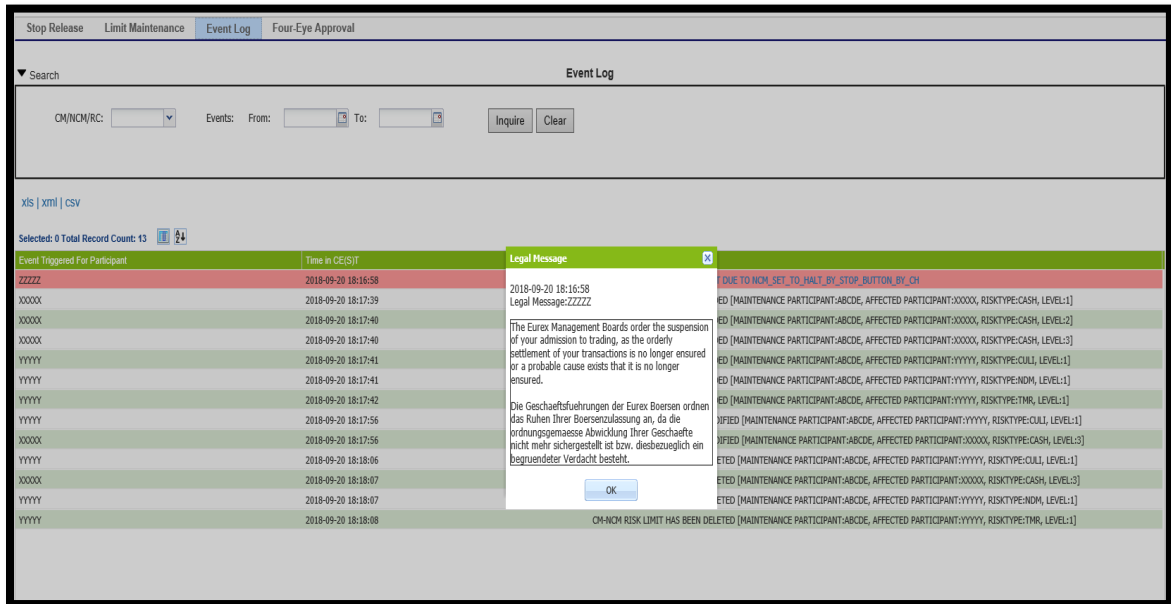


Figure 8: Legal Message Pop up

5.3 Screen Elements

Event Log - Filter criteria	
Filter	Description
CM/NCM/RC	Identification code of the Clearing Member/Non Clearing Member/Registered Customer present in C7 ARP.

Events Filter for the events generated between time duration

Event Log – Buttons	
Button	Description
Inquire	Clicking on Inquire button will display Events of the selected member on the Event Log window.
Clear	Clicking on this button will clear the Inquiry criteria.

Event Log - Table Columns	
Column	Description
CM/NCM/RC	Identification code of the Clearing Member/Non Clearing Member/Registered Customer present in C7 ARP.

C7 Advanced Risk Protection GUI User Manual

Event Log - Table Columns

Column	Description
Time in CE(S)T	Time at which the event was recorded.
Event	Description of the event.

C7 Advanced Risk Protection GUI User Manual

6 Dashboard

6.1 Description

The *Dashboard* section is available above the *title bar* in the C7 ARP GUI. It displays the Logged In user details and certain statistics of C7 ARP. Further details about these functions can be found in the 'Functionality' section of this window.

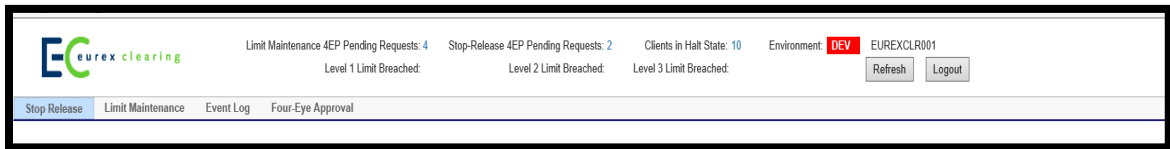


Figure 9: Dashboard with Environment Details

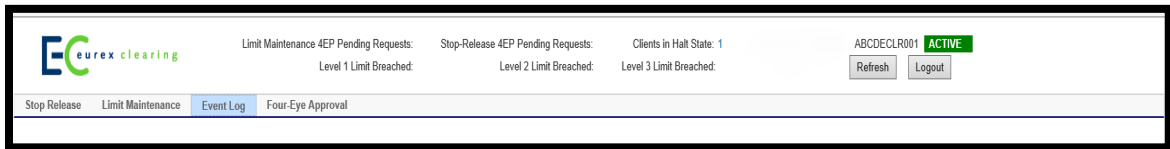


Figure 10: Dashboard

6.2 Functionality

Dashboard provides important statistics to the users. Also, a pop-up functionality is offered for the most important changes in the dashboard (see chapter 7 for more details). The dashboard will display the following fields with the updated values:

- Four-Eye pending changes
- Clients in Halt State
- Level 1 Limit Breached
- Level 2 Limit Breached
- Level 3 Limit Breached
- Member Status of logged in user.
- Environment (SIMU/PROD)

The data displayed in the dashboard is automatically refreshed every 10 seconds (configurable time) to enable the user to view the latest data.

6.3 Screen Elements

The following fields will be displayed in Dashboard:

C7 Advanced Risk Protection GUI User Manual

Dashboard – Fields	
Field	Description
Limit Maintenance 4EP Pending Changes	<p>The count of Limit maintenance Four eye pending changes for approval/rejection.</p> <p>Clicking on the value for this field will open the 'Limit Maintenance Four eye approval window' on the C7 ARP GUI and by default, it will display all the Limit Maintenance four eye pending changes in the grid.</p>
Stop-Release 4EP Pending Changes	<p>The count of Stop-Release Four eye pending changes for approval/rejection.</p> <p>Clicking on the value for this field will open the 'Stop-Release Four eye approval window' on the C7 ARP GUI and by default, it will display all the Stop-release four eye pending changes in the grid.</p>
Clients in Halt State	<p>For a Clearing Member, this field will display the total count of Non Clearing Member/ Registered Customer in 'Halt' status.</p> <p>For the internal Clearing House Operator, this field will display the total count of members which are in 'Halt' status.</p> <p>For Non Clearing Member, this field will contain 'Not Applicable'.</p> <p>Clicking on the value for this field will open the 'Stop-Release' window on the C7 ARP GUI and it will display all the halted members. The 'Halt' radio button will be selected in the Inquiry criteria of the Stop-Release window.</p> <p>Every time when a member status is changed from ACTIVE to HALT or vice versa, the count of field 'Clients in Halt State' will be increased or decreased respectively. A Pop up will be displayed to the user.</p>
Level 1 Limit Breached	<p>The count of of level 1 triggered limits of the member(s).</p> <p>For the Non Clearing Member, the count indicates the number of L1 limits breached for the Non Clearing Member.</p> <p>For the Clearing Member, the count indicates the number of L1 limits breached for the Clearing Member or its clients.</p> <p>For the Clearing House Operator, the count indicates the number of L1 limits breached for members of the respective Clearing House.</p> <p>Clicking on the value for this field will open the 'Limit Maintenance' window on the C7 ARP GUI and it will display all the level 1 risk alerts.</p>
Level 2 Limit Breached	<p>The count of level 2 triggered limits of the member(s).</p> <p>For the Non Clearing Member, the count indicates the number of L2 limits breached for the Non Clearing Member.</p> <p>For the Clearing Member, the count indicates the number of L2 limits breached for the Clearing Member or its clients.</p> <p>For the Clearing House Operator, the count indicates the number of L2 limits breached for the members of the respective Clearing House.</p> <p>Clicking on the value for this field will open the 'Limit Maintenance' window on the C7 ARP GUI and it will display all the level 2 risk alerts.</p>

C7 Advanced Risk Protection GUI User Manual

Dashboard – Fields

Field	Description
Level 3 Limit Breached	<p>The count of level 3 triggered limits of the member(s).</p> <p>For the Non Clearing Member, the count indicates the number of L3 limits breached for the Non Clearing Member.</p> <p>For the Clearing Member, the count indicates the number of L3 limits breached for the Clearing Member or its clients.</p> <p>For the Clearing House Operator, the count indicates the number of L3 limits breached for the members for the respective Clearing House.</p> <p>Clicking on the value for this field will open the 'Limit Maintenance' window on the C7 ARP GUI and it will display all the level 3 risk alerts.</p> <p>Every time when a member's level 3 risk limit is breached or released, the value count of field 'Level 3 Limit Breached' will increase or decrease respectively. A Pop up will be displayed to all the concerned members.</p>
Environment	<p>The environment details like SIMU/PROD will be display in dashboard. In Production GUI the field 'Environment' will not be present in dashboard.</p>
User Name and Status	<p>This field will display the member status of the logged in User.</p> <p>In case of Halt status 'HALT' will be displayed next to the username. In case of Active status, the field will display 'ACTIVE'.</p> <p>Status of Clearing House Operators (ECAG and ECC internal users) will not be shown as they must be in active state all the time.</p> <p>A pop-up must be displayed every time the status of the member changes.</p>

Dashboard – Buttons

Button	Description
Refresh	<p>On clicking the Refresh button, a new inquiry is sent to obtain the refreshed data for the dashboard fields. It will be possible for the user to manually refresh the screen. However, these details will also refresh automatically in every 10 seconds. (configurable).</p>
Logout	<p>On clicking the 'Logout' button system will log out the user from C7 ARP.</p>
Go Back to C7 GUI	<p>'Go Back to C7 GUI' link will close the C7 ARP GUI and redirect the user to C7 GUI.</p>

7 Dashboard Pop Ups

7.1 Description

The Dashboard Pop Ups displays to the concerned users whenever the member's status is changed and risk limit level 3 is breached or released. Further details about these functions can be found in the 'Functionality' section of this window.

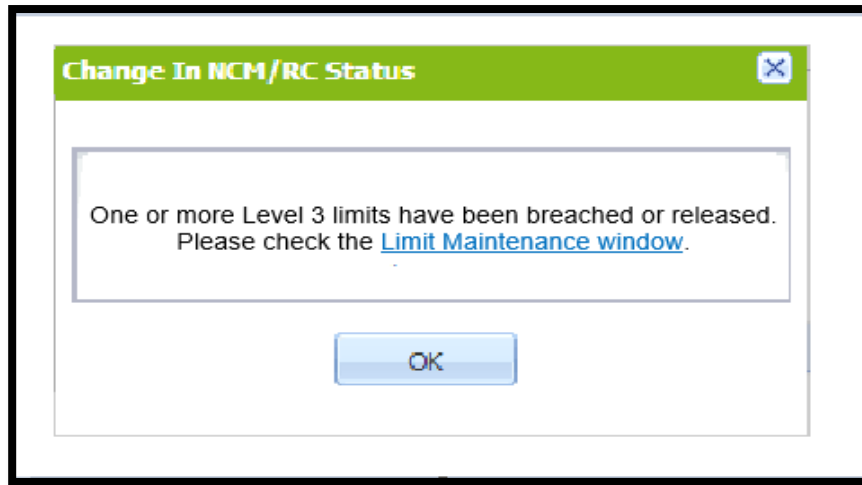


Figure 11: Dashboard Pop Up

7.2 Functionality

Dashboard Pop Ups designed for the convenience of users. These Pop Ups displays to the concerned users whenever the member's status is changed and risk limit level 3 is breached or released.

These Pop up are displayed to the user even if the user is on some other C7 ARP GUI screen or the browser is minimize or it is running in the background. The user has to click 'OK' button in order to close this pop up. The Pop Ups also have a link to open Stop-Release or Limit Maintenance window.

When the user logs in, it receives a pop-up for all the affected dashboard statistics wherever pop-up is applicable.

7.3 Screen Element

Following are the different Pop Ups.

Dashboard Pop Ups		
Pop Up	Event to Trigger Pop Up	Pop Up Message
Clients in Halt State	Non Clearing Member Status is changed from ACTIVE to HALT or HALT to ACTIVE	'Member status for one or more clients have been changed. Please check the Stop-Release window .' The Stop-Release window in the above pop-up message is a hyperlink. Clicking on the hyperlink will open the 'Stop-Release' window on the C7 ARP GUI and it will display all the halted members.

C7 Advanced Risk Protection GUI User Manual

Dashboard Pop Ups		
Pop Up	Event to Trigger Pop Up	Pop Up Message
Level 3 Limit Breached	A Level 3 limit is breached or released	<p>'One or more Level 3 limits have been breached or released. Please check the Limit Maintenance window.</p> <p>The Limit Maintenance window in the above pop-up message is a hyperlink. Clicking on the hyperlink will open the 'Limit Maintenance' window on the C7 ARP GUI and it will display all the level 3 risk alerts.</p>
Change in Member status of logged in user	The member status of the logged in user changes from HALT to ACTIVE or ACTIVE to HALT	<p>Your status has changed to HALT</p> <p>OR</p> <p>Your status has changed to ACTIVE</p>