

Eurex Repo/SecLend Service Notice

Subject	Announcement of Focus Day on 14 December 2011 for Optional Eurex Repo Release 12.1.2		
To	<input checked="" type="checkbox"/> IT Administrators <input type="checkbox"/> Repo Business Coordinators		
Authorised by	Arnold Josef		
Markets	<input checked="" type="checkbox"/> CHF Repo Market <input checked="" type="checkbox"/> OTC Spot Market	<input checked="" type="checkbox"/> Euro Repo Market / GC Pooling Market <input checked="" type="checkbox"/> SecLend Market	
Pages	3		
Date	07.12.2011		Action required 

Please be advised that SIX Swiss Exchange and Eurex Repo will hold a **Focus Day** for the new, optional **Eurex Repo Release 12.1.2** in the Membertest environment **on 14 December 2011**. During the Focus Day, you will have the possibility to test the behaviour of your Eurex Repo applications in various failover scenarios.

- If you intend to use the **new Trading Client GUI 12.1.2** and **Service Connector SC 1.3.21**, we **highly recommend** that you participate in the Focus Day. Please make sure you have downloaded and installed Trading Client GUI 12.1.2 and Service Connector SC 1.3.21 in the Membertest (M01) environment before the Focus Day (see [Service Notice of 02.12.2011](#) for details on the new release).
- If you continue to use the current Trading Client GUI 12.0.11 and Service Connector SC 1.3.16, you are invited to also participate in the Focus Day.

1 Schedule of Focus Day

The Focus Day activities will start at 13:30 CET according to the schedule given below.

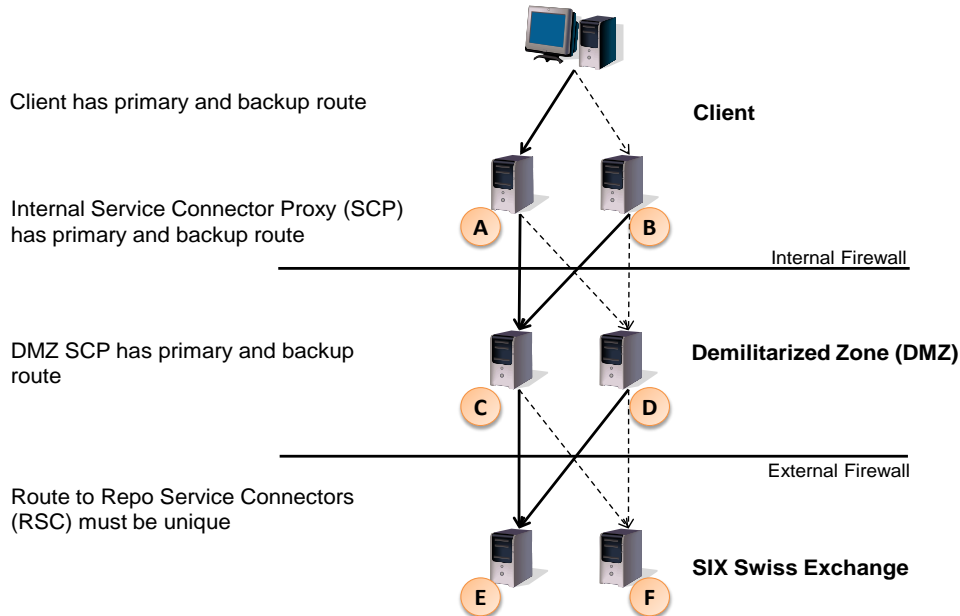
No	Time (CET)	Who	Task
1	13:30	Participant	Start all trading applications available (Trading Client GUI, OTX, PAPI) and the internal SC Proxy (SCP)
2	14:00	Participant	Shut down internal SCP (A) if available
3	14:10	Participant	Restart internal SCP (A) if available
4	14:15	Participant	Shut down backup SCP (B) if available
5	14:25	Participant	Restart internal SCP (B) if available
6	14:30	Participant	Shut down DMZ SCP (C) if available
7	14:40	Participant	Restart DMZ SCP (C) if available

No	Time (CET)	Who	Task
8	14:45	Participant	Shut down backup SCP (D) if available
9	14:55	Participant	Restart backup SCP (D) if available
10	15:00	Eurex Repo	Shutdown RSC1 (E)
11	15:10	Eurex Repo	Restart RSC1 (E)
12	15:15	Eurex Repo	Shutdown RSC2 (F)
13	15:25	Eurex Repo	Restart RSC2 (F)
14	15:30	Eurex Repo	Shutdown Backend 1 (not in chart)
15	15:40	Eurex Repo	Restart Backend 1 (not in chart)
16	15:45	Eurex Repo	Shutdown Backend 2 (not in chart)
17	15:55	Eurex Repo	Restart Backend 2 (not in chart)
20	16:00	Participant	Run Support Assistant (SA) on all Trading Clients involved in the test to provide us with the log files so we can validate the failover Note: The Support Assistant (SA) can be started on the client directly in the GUI by clicking Help >>> Support Assistant >>> Execution >>> Execute Inspection
21	16:15	All	End failover tests

Letters in the task description (**A** , **B** , ...) above refer to graphic below

2 Network Setup with Primary and Secondary Service Connector Proxy

We recommend that the clients are set up to use a primary and a backup Service Connector Proxy.



If you have any questions, please do not hesitate to contact your Eurex Repo Technical Helpdesk
Geneva +41 58 399 2028
London +44 20 7864 4334
Zurich +41 58 399 2488

Or send an e-mail to techhelp@eurexrepo.com.

The Eurex Repo Technical Helpdesk is operated by the SIX Swiss Exchange Member Support Center.